

Pressure regulator pneumatic pilot operated | BG8

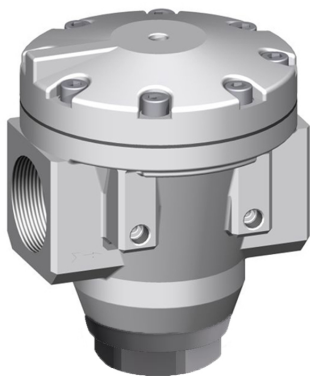


Image shows:  
9.1587.00.100.0V

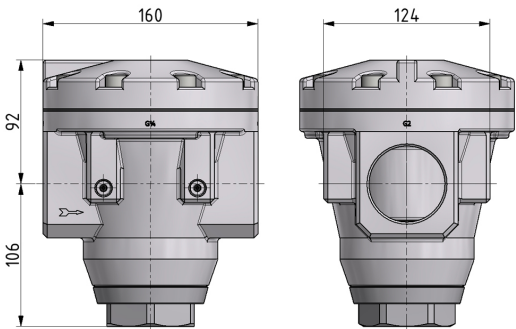
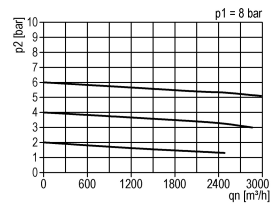
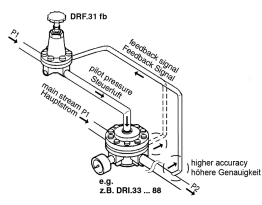


Image shows:  
9.1587.00.100.0V

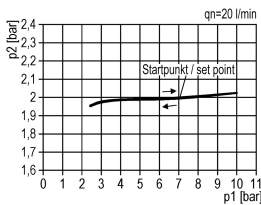
flow characteristic



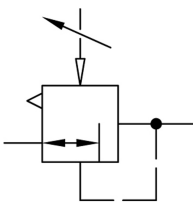
operating conditions



pressure characteristic



symbol



technical data

- **description:** air line regulator with diaphragm and relieving feature, pneumatic pilot-operated (1:1)
- **medium:** compressed air, neutral gases
- **supply pressure P1 max.:** 25 bar
- **temperature range:** -10°C - +80°C

accessories

type	part-number	description
DRI.87	9.1587.00.100.0V	Pressure regulator G1 1/2 pneumatic pilot operated (G1/4)
DRI.88	9.1588.00.100.0V	Pressure regulator G2 pneumatic pilot operated (G1/4)

Service 3 unit

Service 2 unit

Filter regulator

Filter

Pressure regulator

Lubricator

System extensions

Accessories

Special products