

Pressure regulator pneumatic pilot operated | BG7

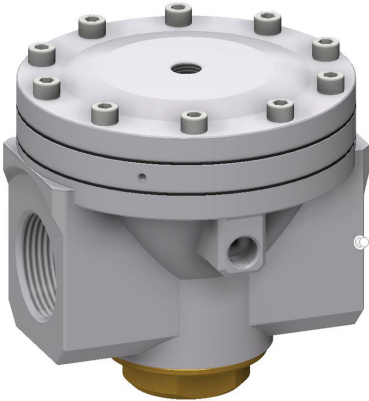


Image shows:
9.1576.00.100.0

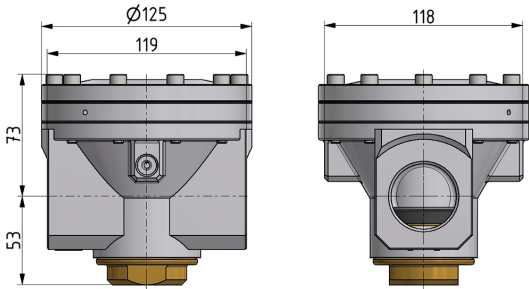
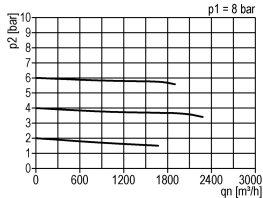
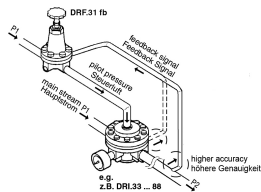


Image shows:
9.1576.00.100.0

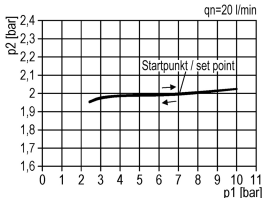
flow characteristic



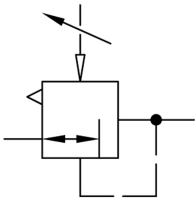
operating conditions



pressure characteristic



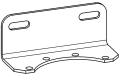
symbol



technical data

- **description:** air line regulator with diaphragm and relieving feature, pneumatic pilot-operated (1:1)
- **medium:** compressed air, neutral gases
- **supply pressure P1 max.:** 25 bar
- **temperature range:** -10°C - +80°C

accessories



- **mounting bracket:** [BW.50](#)

type	part-number	description
DRI.76	9.1576.00.100.0	Pressure regulator G1 1/4 pneumatic pilot operated (G1/4)
DRI.77	9.1577.00.100.0V	Pressure regulator G1 1/2 pneumatic pilot operated (G1/4)