

Pressure regulator pneumatic pilot operated | BG5

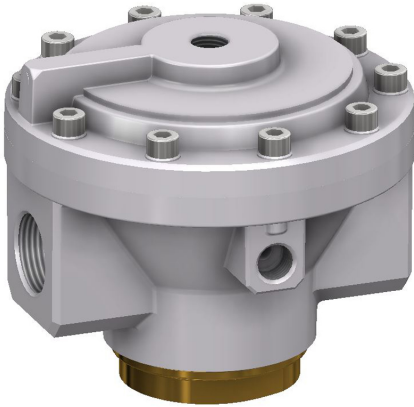


Image shows:
9.1554.00.110

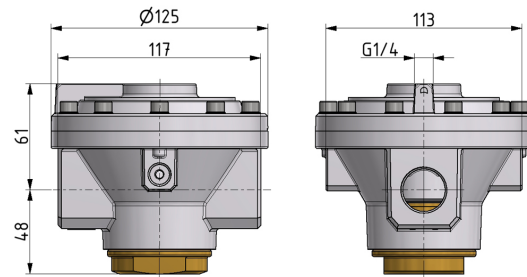
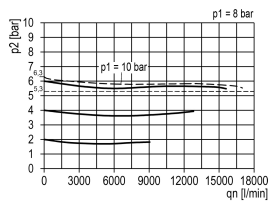
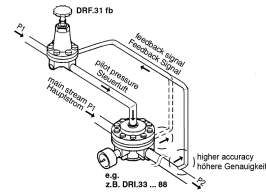


Image shows:
9.1554.00.110

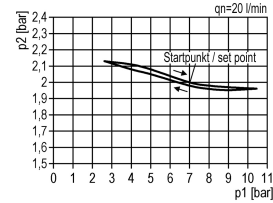
flow characteristic



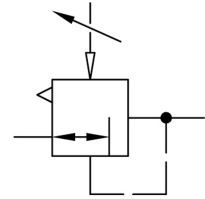
operating conditions



pressure characteristic



symbol



technical data

- description:** air line regulator with diaphragm and relieving feature, pneumatic pilot-operated (1:1)
- medium:** compressed air, neutral gases
- supply pressure P1 max.:** 40 bar
- temperature range:** -10°C - +80°C

accessories

type	part-number	description
DRI.54 N	9.1554.00.110	Pressure regulator G3/4 pneumatic pilot operated (G1/4), new edition innovation summer 2018
DRI.55 N	9.1555.00.110	Pressure regulator G1 pneumatic pilot operated (G1/4), new edition innovation summer 2018
DRI.55 N	9.1555.00.112	Pressure regulator G1 pneumatic pilot operated (G1/4), new edition, without relieving feature innovation summer 2018