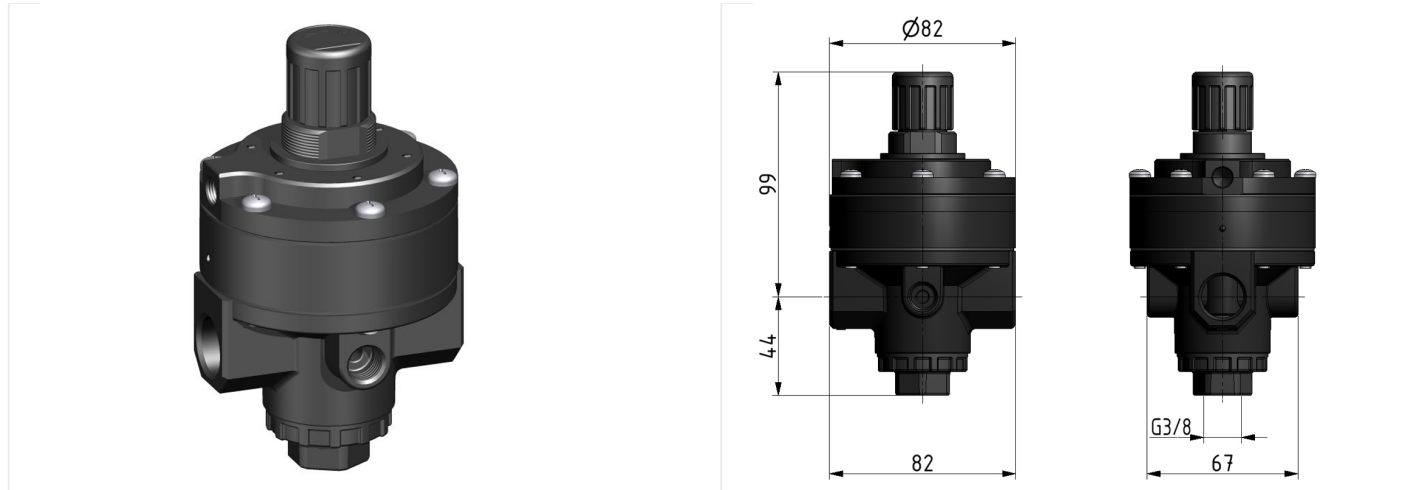


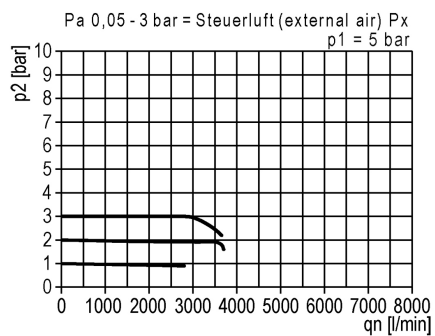
## Pressure-regulator of the Standard series

Precision pressure regulator G1/2 pneumatic pilot operated (G1/8) with additional mechanical fine tuning within the range of 1 bar (black painted)

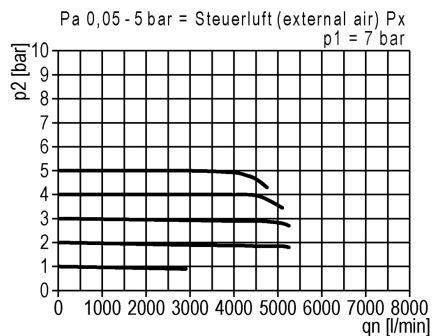


type	part-number	series	port size	flow rate	adjustment range P2 max.	weight
FDRZ.03-33 B1	9.6233.00.450.2V	Standard	G 1/2	6500 l/min	10 bar	1.234 kg

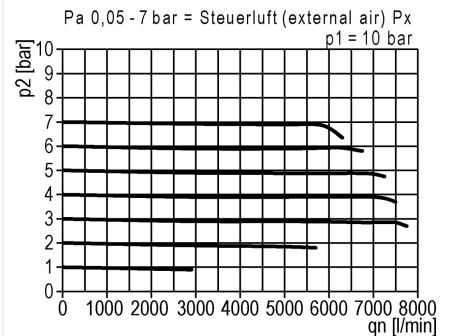
flow characteristic 1



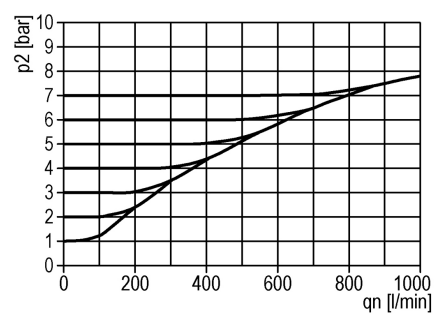
flow characteristic 2



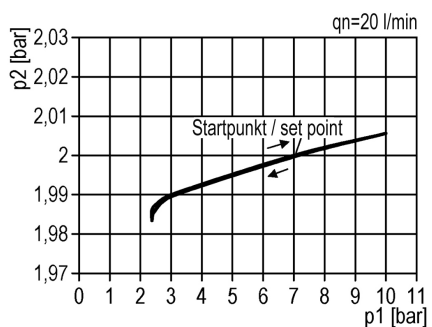
flow characteristic 3



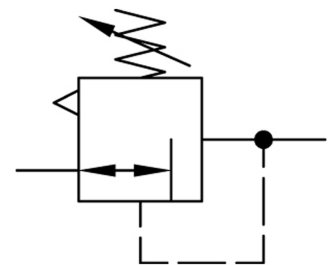
exhaust characteristics



pressure characteristic



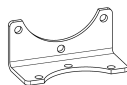
symbol



#### technical data

- **description:** air line regulator with diaphragm and relieving feature, pneumatic pilot-operated (1:1), with additional mechanical fine tuning within the range of 1 bar
- **medium:** compressed air, neutral gases
- **supply pressure P1 max.:** 16 bar
- **temperature range:** -35°C - +60°C
- **air consumption:** < 6 l/min at P1 16 bar

#### accessories



- mounting bracket:  
[FDR.03-52](#)